

Munters Euroemme LFd

Light filters

Light control plays a crucial role in modern poultry and greenhouse applications. An optimally controlled light program positively influences production performance (layer rearing, layer production, breeder), while for selected crop types light filtering helps create optimal growing conditions.

Benefits

- 100% light reduction
- UV-stabilized lamella
- Galvanised metal frame
- High-pressure cleaning
- Fast and easy assembly
- Low transport volume



The first step in controlling light is a light-tight building. However, in practical use, limiting and regulating the entry of light can conflict with the ventilation needs, as daylight can enter through both air inlets and exhaust fans openings. This problem can be solved with light filters.

LFd allows continuous airflow into the building while preventing light from entering. The specially shaped lamellas reflect the light several times. Each reflection absorbs some of the light, resulting in a reduction in intensity.

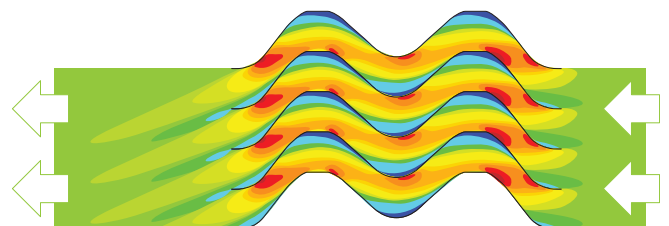
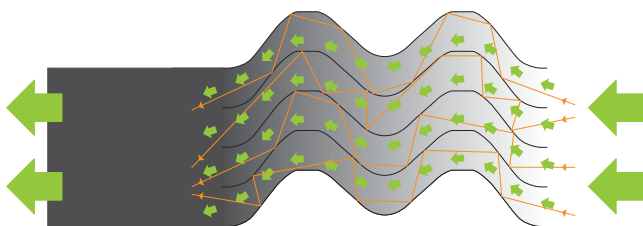
The LFd double shaft design prevents light penetration by practically 100% (>99.9999%).

As the market leader in ventilation solutions for more than 60 years, GrainProteinTech Climate Control & Air Treatment guarantees quality and is ISO 9001 certified.



Proudly manufactured with 100% renewable energy in our plants in Italy

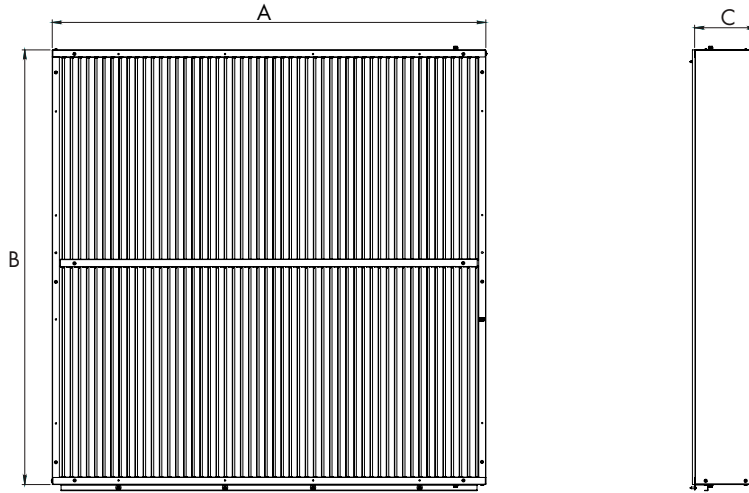
LFd functioning principle



Munters Euroemme LFd

Light filters

Dimensions



	A	B	C
LFd24	750 mm	750 mm	230 mm
LFd30 ¹	960 mm	960 mm	230 mm
LFd36	1,100 mm	1,090 mm	230 mm
LFd50 ¹	1,380 mm	1,380 mm	230 mm
LFd55	1,630 mm	1,630 mm	230 mm

¹A spacer kit is required for the installation of the LFd onto ED30HE and EC50 exhaust fans

Technical specifications

	LFd (double shaft)
Light reduction factor	2.000.000 : 1 (160,000 to 0.12 lux)
Lamella material	UV-resistant PP
Frame material	M-Protect

Pressure loss

